



SACVALLEY MEDSHARE



SacValley MedShare: *Taking data from moveable to useable*

OVERVIEW

Presented by: John Helvey and James Forte



MISSION STATEMENT



John Helvey

SVMS Chief Executive Officer

“To be a catalyst of sustained improvement in the lives of those I touch.”

"Improve the health and well-being of the communities we serve through the exchange of vital information with trusted partners"

VISION STATEMENT

To become a model for inclusive provision of health information exchange across our diverse communities, that others may build upon to serve similar communities



VALUE STATEMENT

Communication is vital to efficient, effective, safe patient management, both in terms of health and wellness maintenance and treatment. Most system-related lapses in healthcare quality relate to poor communication between patients, providers, and others. If the focus is on the patient alone, there is a clear benefit from coming together and sharing information.

Qualified Health Information Organization (QHIO) can directly or indirectly benefit the participants other than patients, however. The benefits can be broadly categorized as follows:

- Direct improvement in patient care efficiency, quality, and safety
- Healthcare cost containment
- Increasing the efficiency of healthcare provision
- Meeting local, regional or national standards
- Maintaining market share in an evolving system

SacValley MedShare has been named a Qualified Health Information Organization (QHIO) by the State of California (CalHHS)

- **California Announces Designation of Nine Qualified Health Information Organizations to Support Secure Statewide Data Exchange Ahead of January 2024 Deadline**



WHAT YOU NEED TO KNOW:

California's newly designated QHIOs will play a critical role in promoting the secure exchange of health information under the Data Exchange Framework (DxF), empowering health and social services providers across California to provide the best possible care.

ROLE OF QUALIFIED HEALTH INFORMATION ORGANIZATIONS (QHIOs): QHIOs fulfill the promise of a connected California by providing data exchange capabilities many health and social service entities currently do not possess, especially those serving historically marginalized populations and underserved communities. Connecting these entities and enabling their participation will broaden the reach of the DxF across the state, breaking down information silos that have long stood as barriers to effective, informed care. This milestone in interoperability will help ensure every Californian, regardless of where they seek care, can be assured their health and social services providers have access to a more complete picture of their health and are able to work together to provide the best possible care.

SVMS HISTORY



Founded in 2012 as a 501(c)(3) nonprofit with 8 founding members

8 founding members in 7 Northern California Counties by local providers and hospitals



5 counties added in 2015

5 additional counties (merged with North State Health Connect) & multiple new members



3 counties added in 2020

Placer, Nevada, Sierra – through EMSA +EMS SAFR Grant



2 counties added in 2021

Mendocino & Lake – through Cal HOP Grant



2023 QHIO

2023 Qualified Health Information Organization designation



Dignity/Common Spirit 2024

We ended 2024 with 24 counties and expanded our reach state-wide with our Dignity Health Partnership



4 counties added in 2018

4 additional counties (merged with Connect HealthCare) & multiple new members



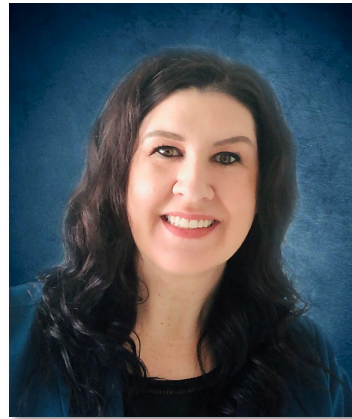
SACVALLEY MEDSHARE



SacValley MedShare Team



John Helvey
Chief Executive Officer



Tiffany Hodgins
Chief Technology and
Quality Officer



James Forte
Director of Business
Development and
Marketing



Jennifer Inden
QHIO Program and
Project Director



Chery Risner
Executive Assistant
and Bookkeeper

SacValley MedShare Board of Directors 2025

Our board members are more than just a group of individuals – We're a dedicated collective of passionate professionals united by a common goal: To improve the quality and safety of healthcare across California's healthcare landscape.

<p>Elizabeth Steffen MBA/TM, PMP Board Chair Chief Information Officer Plumas District Hospital</p>	<p>Denise Lefevre Board Vice Chair Chief Information Officer Oroville Hospital</p>	<p>Charles Kitzman MMI, MHA Board Treasurer Information Officer Rogue Community Health</p>	<p>Robert Folden MBA, MPAH, CLS Board Secretary Vice President and Chief Operating Officer Dignity Health's Mercy Medical Center Redding</p>
<p>T Abraham Regional Vice President Hospital Council Of Northern & Central California</p>	<p>DR. Robert Moore MD, MPH Chief Medical Officer Partnership HealthPlan Of California</p>	<p>DR. Danielle Oryn DO Chief Medical Informatics Officer Aliados Health</p>	<p>Carlos Peralta Chief Operations Officer Ampla Health</p>
<p>Teri Schmitt Health Information Specialist Mountain Valleys Health Centers/299 Collaborative</p>	<p>Scott Hill Sr. Enterprise Solution and Interoperability Architect Enloe Medical Center</p>	<p>Ara Chakrabarti Chief Executive Officer Redwood Coast Medical Services</p>	<p>Melinda Miers Director Health Information Exchange at Adventist Health</p>
<p>Garrett Olin MBA, LSSMB, CPHQ, CHDA Chief Information Officer Shasta Community Health Center</p>	<p><i>Health & Human Services Position Open</i></p>	<p><i>Consumer Patient Position Open</i></p>	

SacValley MedShare - Participants

Hospitals | Imaging Centers | Palliative Care | Health Plans | RHC | FQHC | SPECIALTY Care | LTAC | Public health | Behavioral health



SacValley MedShare: Taking data from moveable to useable

www.sacvalleymys.org

SacValley MedShare - Partners

eHealth Exchange™



KAISER PERMANENTE



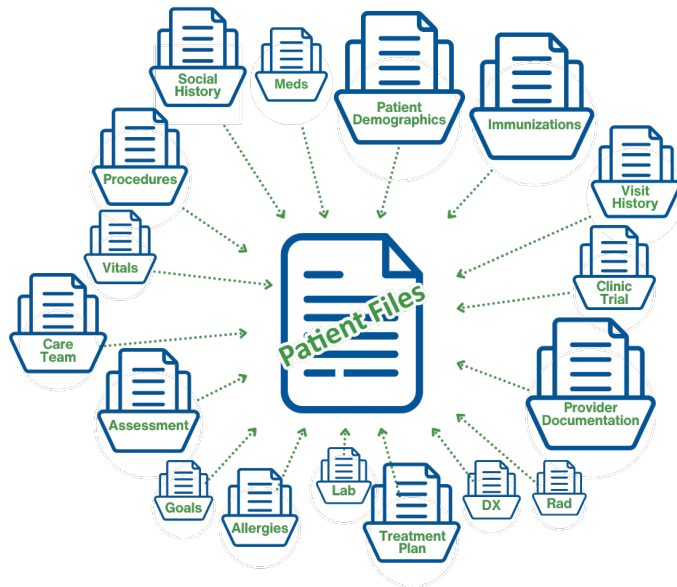
SacValley MedShare: Taking data from moveable to useable

www.sacvalleyms.org

DxF and USCDIv2 2024, 2026 requirements

The CA DxF will require **USCDI** v2 via Health Level Seven (HL7®) Clinical Document Architecture (CDA®), HL7v2, or Fast Healthcare Interoperability Resources (FHIR®) formats via health information exchange (HIE) profiles including:

- Cross-Community Patient Discovery (XCPD) for patient search requests/response
- Cross-Community Access (XCA) for requesting/sending clinical information



DxF Permitted, Required, & Prohibited Purposes

Permitted

- Participants are allowed to exchange or provide access to HSSI for any purpose not listed in the Prohibited Purposes section.
 - This includes specially protected information.
- Appropriate Authorizations and compliance with Applicable Law is necessary.

Required

- Participants must exchange Health and Social Services Information for Treatment, Payment, Health Care Operations, and Public Health Activities.
- HSSI can only be disclosed for Health Care Operations if the entities have a relationship with the Individual User.

Prohibited

- Participants cannot access HSSI through the DSA to sell the information.
 - Unless permitted by Applicable Law or legally valid agreement.
- Use the DSA to access HSSI in order to unlawfully discriminate, deny or limit access to medical services, or prosecute or take any other adverse action against an individual.

SacValley MedShare - Services

ADT Notifications + ADT Look Up

Direct Secure Messaging

CareAlign Portal

eHealth Exchange

CareQuality

Acute Alerts

Alerts via HL7v2

Analytics Dashboards

Member C-CDA for Patient Panels

NCQA DAV Accredited C-CDA for Patient Panels

HEDIS Extracts

Search Alert File Reconcile

Future Services

ePOLST

SDOH – NinePatch

HMIS Integration

Consent Management

Medical Referral Platform

SAFR Options

Personal Health Record Vendors

Prior Authorization

Higher Quality Analytics

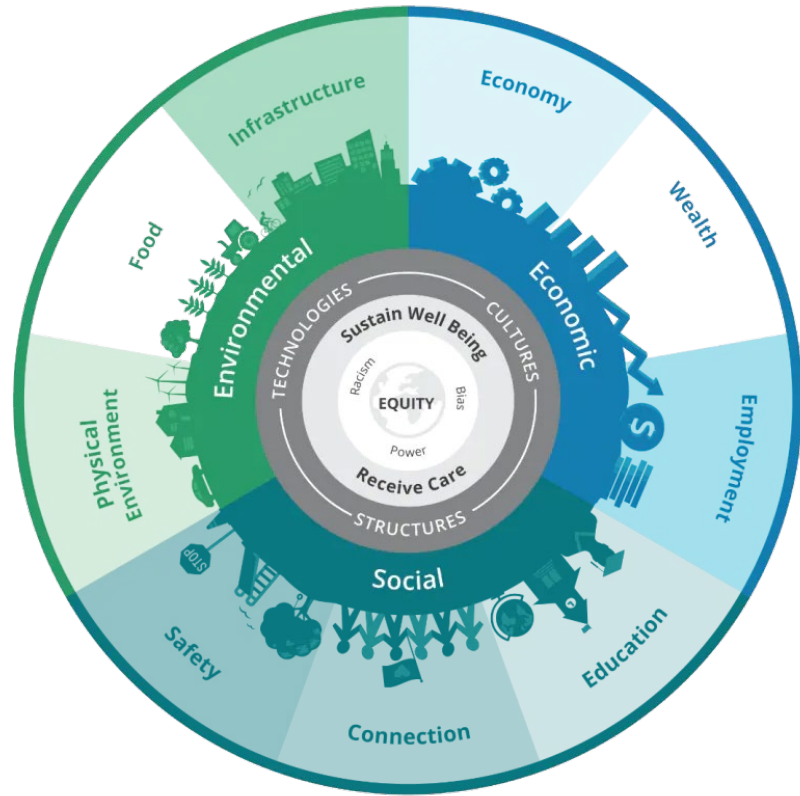
NCQA DAV ACCREDITED SITES



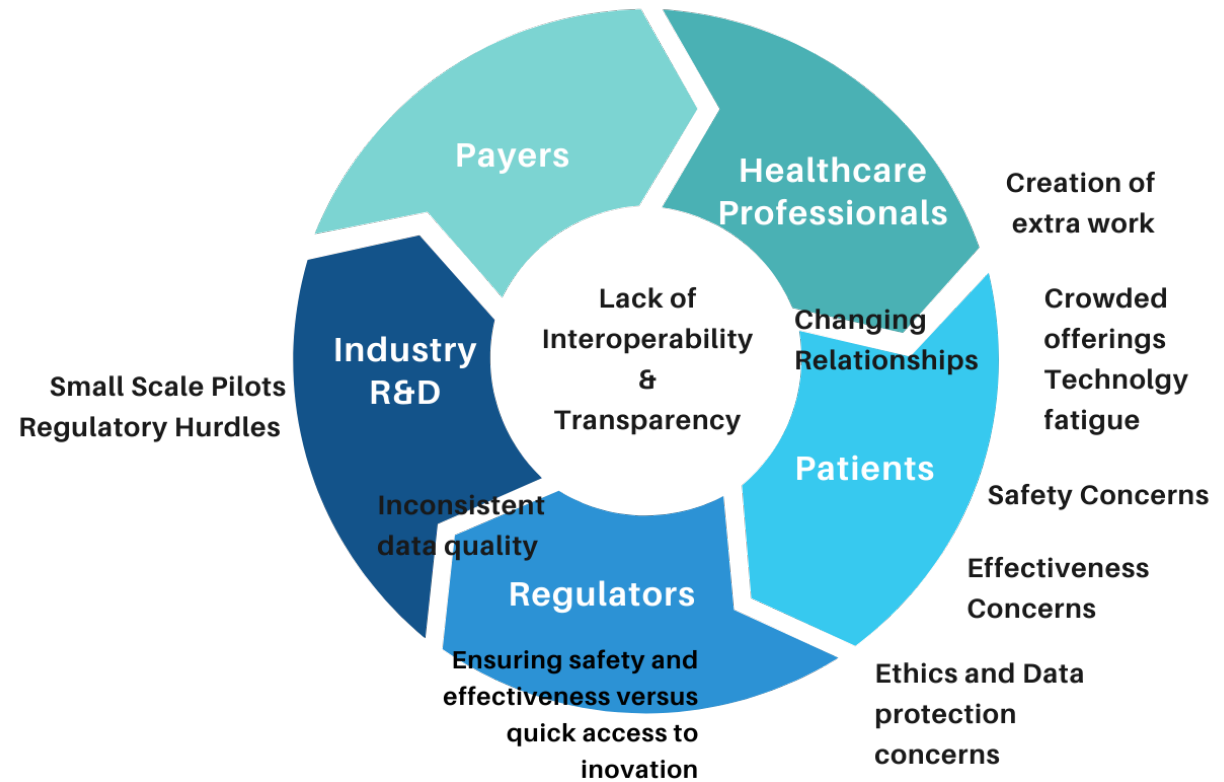
DAV Parent Name	Child/Participant Name	Care Setting	State	EHR Name	DAV Parent Name	Child/Participant Name	Care Setting	State	EHR Name
Adventist Health	Adventist Health: Clearlake	Hospital-based Care	CA	Cerner Millennium	Dignity Health	CommonSpirit/Dignity Health Mt Shasta Community Clinic	Outpatient Care	CA	Cerner Millennium
Adventist Health	Adventist Health: Clearlake	Outpatient Care	CA	Cerner Millennium	Dignity Health	CommonSpirit/Dignity Health Mt Shasta Community Clinic II	Outpatient Care	CA	Cerner Millennium
Adventist Health	Adventist Health: Colusa	Outpatient Care	CA	Cerner Millennium	Dignity Health	CommonSpirit/Dignity Health North State Airpark Endocrinology	Outpatient Care	CA	Cerner Millennium
Adventist Health	Adventist Health: Feather River	Hospital-based Care	CA	Cerner Millennium	Dignity Health	CommonSpirit/Dignity Health North State Airpark ENT	Outpatient Care	CA	Cerner Millennium
Adventist Health	Adventist Health: Feather River	Outpatient Care	CA	Cerner Millennium	Dignity Health	CommonSpirit/Dignity Health North State Court Street Internal Medicine	Outpatient Care	CA	Cerner Millennium
Adventist Health	Adventist Health: Howard Memorial	Hospital-based Care	CA	Cerner Millennium	Dignity Health	CommonSpirit/Dignity Health North State Eureka Way	Outpatient Care	CA	Cerner Millennium
Adventist Health	Adventist Health: Howard Memorial	Outpatient Care	CA	Cerner Millennium	Dignity Health	CommonSpirit/Dignity Health North State RED BLUFF 2526	Outpatient Care	CA	Cerner Millennium
Adventist Health	Adventist Health: Konocti	Outpatient Care	CA	Cerner Millennium	Dignity Health	CommonSpirit/Dignity Health Solano Street Medical Clinic	Outpatient Care	CA	Cerner Millennium
Adventist Health	Adventist Health: Lakeport	Outpatient Care	CA	Cerner Millennium	Dignity Health	CommonSpirit/Dignity Health St. Elizabeth Community Hospital	Hospital-based Care	CA	Cerner Millennium
Adventist Health	Adventist Health: Mendocino Coast District Hospital	Hospital-based Care	CA	Cerner Millennium	Dignity Health	CommonSpirit/Dignity Health Woodland Memorial Hospital	Hospital-based Care	CA	Cerner Millennium
Adventist Health	Adventist Health: Mendocino Coast District Hospital	Outpatient Care	CA	Cerner Millennium	Enloe Medical Center	Enloe Medical Center	Hospital-based Care	CA	Epic Cindoc
Adventist Health	Adventist Health: Napa	Outpatient Care	CA	Cerner Millennium	Enloe Medical Center	Enloe Medical Center	Outpatient Care	CA	Epic Ambulatory
Adventist Health	Adventist Health: St. Helena	Hospital-based Care	CA	Cerner Millennium	Feather River Tribal Health	Feather River Tribal Health	Outpatient Care	CA	NextGen Enterprise
Adventist Health	Adventist Health: St. Helena	Outpatient Care	CA	Cerner Millennium	Glenn Medical Center	Glenn Medical Center	Hospital-based Care	CA	CPSI Evident Thrive
Adventist Health	Adventist Health: Ukiah Valley	Hospital-based Care	CA	Cerner Millennium	Glenn Medical Center	Glenn Medical Center	Outpatient Care	CA	CPSI Evident Thrive
Adventist Health	Adventist Health: Ukiah Valley	Outpatient Care	CA	Cerner Millennium	Mayers Memorial Hospital	Mayers Memorial Hospital	Hospital-based Care	CA	Allscripts Paragon
Ampla Health	Ampla Health	Outpatient Care	CA	EClinical Works	Mayers Memorial Hospital	Mayers Memorial Rural Health Clinics	Outpatient Care	CA	Allscripts Paragon
Banner Lassen Medical Center	Banner Lassen Medical Center	Hospital-based Care	CA	Cerner Millennium	North Eastern Rural Health Clinics	North Eastern Rural Health Clinics	Outpatient Care	CA	EClinical Works
Banner Lassen Medical Center	Banner Lassen Medical Center	Outpatient Care	CA	Cerner Millennium	NorthBay Healthcare	NorthBay Healthcare (Fairfield & Vacaville)	Hospital-based Care	CA	Cerner Millennium
Colusa Medical Center	Colusa Medical Center	Hospital-based Care	CA	CPSI Evident Thrive	NorthBay Healthcare	NorthBay Healthcare (Fairfield & Vacaville)	Outpatient Care	CA	Cerner Millennium
Colusa Medical Center	Colusa Medical Center	Outpatient Care	CA	CPSI Evident Thrive	Orchard Hospital	Orchard Hospital (FKA: Biggs Gridley)	Hospital-based Care	CA	CPSI Evident Thrive
Dignity Health	CommonSpirit/Dignity Health DHC-NORTH STATE-NHA	Outpatient Care	CA	Cerner Millennium	Orchard Hospital	Orchard Hospital (FKA: Biggs Gridley)	Outpatient Care	CA	CPSI Evident Thrive
Dignity Health	CommonSpirit/Dignity Health DHC-NORTH STATE-NRA	Outpatient Care	CA	Cerner Millennium	Oroville Hospital	Oroville Hospital	Hospital-based Care	CA	Tenzing Vista
Dignity Health	CommonSpirit/Dignity Health Lake Shastina Community Clinic	Outpatient Care	CA	Cerner Millennium	Oroville Hospital	Oroville Hospital	Outpatient Care	CA	Tenzing Vista
Dignity Health	CommonSpirit/Dignity Health Medical Group - North State Red Bluff 3	Outpatient Care	CA	Cerner Millennium	Plumas District Hospital	Plumas District Hospital	Hospital-based Care	CA	Cerner Community Works
Dignity Health	CommonSpirit/Dignity Health Medical Group Airpark	Outpatient Care	CA	Cerner Millennium	Plumas District Hospital	Plumas District Hospital	Outpatient Care	CA	Cerner Community Works
Dignity Health	CommonSpirit/Dignity Health Medical Group Court Street	Outpatient Care	CA	Cerner Millennium	Redding Rancheria Tribal Health Systems	Redding Rancheria Tribal Health Systems	Outpatient Care	CA	NextGen Enterprise
Dignity Health	CommonSpirit/Dignity Health Medical Group- North State Edith Avenue	Outpatient Care	CA	Cerner Millennium	Redwood Coast Medical Services	Redwood Coast Medical Services	Outpatient Care	CA	NextGen Enterprise
Dignity Health	CommonSpirit/Dignity Health Medical Group Red Bluff	Hospital-based Care	CA	Cerner Millennium	Shasta Cascade Health Center	Shasta Cascade Health Center (McCloud Healthcare Clinic)	Outpatient Care	CA	AthenaOne
Dignity Health	CommonSpirit/Dignity Health Mercy Family Health Center Residency Program	Outpatient Care	CA	Cerner Millennium	Shasta Community Health Centers	Shasta Community Health Center	Outpatient Care	CA	NextGen Enterprise
Dignity Health	CommonSpirit/Dignity Health Mercy Maternity Clinic	Outpatient Care	CA	Cerner Millennium	Shasta Regional Medical Center	Shasta Regional Medical Center	Hospital-based Care	CA	Meditech - Client/Server
Dignity Health	CommonSpirit/Dignity Health Mercy Medical Center Mt. Shasta	Hospital-based Care	CA	Cerner Millennium	Shasta Regional Medical Center	Shasta Regional Medical Center	Outpatient Care	CA	Meditech - Client/Server
Dignity Health	CommonSpirit/Dignity Health Mercy Medical Center Redding	Hospital-based Care	CA	Cerner Millennium	Surprise Valley Hospital	Surprise Valley Hospital	Hospital-based Care	CA	CPSI Evident Thrive
					Surprise Valley Hospital	Surprise Valley Hospital	Outpatient Care	CA	CPSI Evident Thrive
					Trinity Hospital	Trinity Hospital	Hospital-based Care	CA	CPSI Evident Thrive
					Trinity Hospital	Trinity Hospital	Outpatient Care	CA	CPSI Evident Thrive



Influencing FACTORS FROM THE HealthCare ecosystem



LACK OF COST-EFFECTIVE DATA



Behavioral Health – BHQIP - CALAIM

Counties

- Shasta
- Lake
- Mendocino
- Sutter-Yuba
- Solano
- Placer
- Sonoma
- Siskiyou
- Butte – Final Stages
- Trinity – Final Stages
- Modoc – Preliminary Stages
- Humboldt – Preliminary Stages

EMR Vendors

- Net Smart
- CalMHSA
- Credible

Payers

- Partnership Health Plan
- Centene
- Elevance Health / Anthem

Sample Use Cases

- CalAIM Alerts
 - Substance Use DX @ ER or IP
 - Eating Disorder DX @ ER or IP
- Medication Management Alerts
 - Behavior Health Provider and Managed Care Plan – Same DX
- Whole Person Care Management Model
- Closed Loop Referral Process
- Justice System Integration



SOCIAL DETERMINANTS OF HEALTH

The social determinants of health are the conditions in which we are born, we grow and age, and in which we live and work. The factors below impact on our health and wellbeing.



Quality Measures – HEDIS 2023 (Healthcare Effectiveness Data & Information Set)

New

- Oral Evaluation, Dental Services (OED)
- Topical Fluoride for Children (TFC)
- Deprescribing of Benzodiazepines in Older Adults (DBO)
- Emergency Department Visits for Hypoglycemia in Older Adults with Diabetes (EDH)
- Social Need Screening and Intervention (SNS-E)
- Food Screening
- Food Intervention
- Housing Screening
- Housing Intervention
- Transportation Screening
- Transportation Intervention
- Adult Immunization Status (AIS-E)

Adult Immunization Status (AIS-E)
Appropriate Testing for Pharyngitis (CWP)
Appropriate Treatment for Upper Respiratory Infection (URI)
Avoidance of Antibiotic Treatment for Acute Bronchitis/Bronchiolitis (AAB)
Breast Cancer Screening (BCS-E)
Cervical Cancer Screening (CCS-E)
Childhood Immunization Status (CIS-E)
Colorectal Cancer Screening (COL-E)
Depression Remission or Response for Adolescents and Adults (DRR-E)
Depression Screening and Follow-Up for Adolescents and Adults (DSF-E)
Follow-Up After Emergency Department Visit for Mental Illness (FUM)
Follow-Up Care for Children Prescribed ADHD Medication (ADD-E)
Immunizations for Adolescents (IMA-E)
Metabolic Monitoring for Children and Adolescents on Antipsychotics (APM-E)
Non-Recommended PSA-Based Screening in Older Men (PSA)
Postpartum Depression Screening and Follow-Up (PDS-E)
Prenatal Depression Screening and Follow-Up (PND-E)
Prenatal Immunization Status (PRS-E)
Risk of Continued Opioid Use (COU)
Social Need Screening and Intervention (SNS-E)
Unhealthy Alcohol Use Screening and Follow-Up (ASF-E)
Use of Opioids from Multiple Providers (UOP)
Utilization of the PHQ-9 to Monitor Depression Symptoms for Adolescents and Adults (DMS-E)

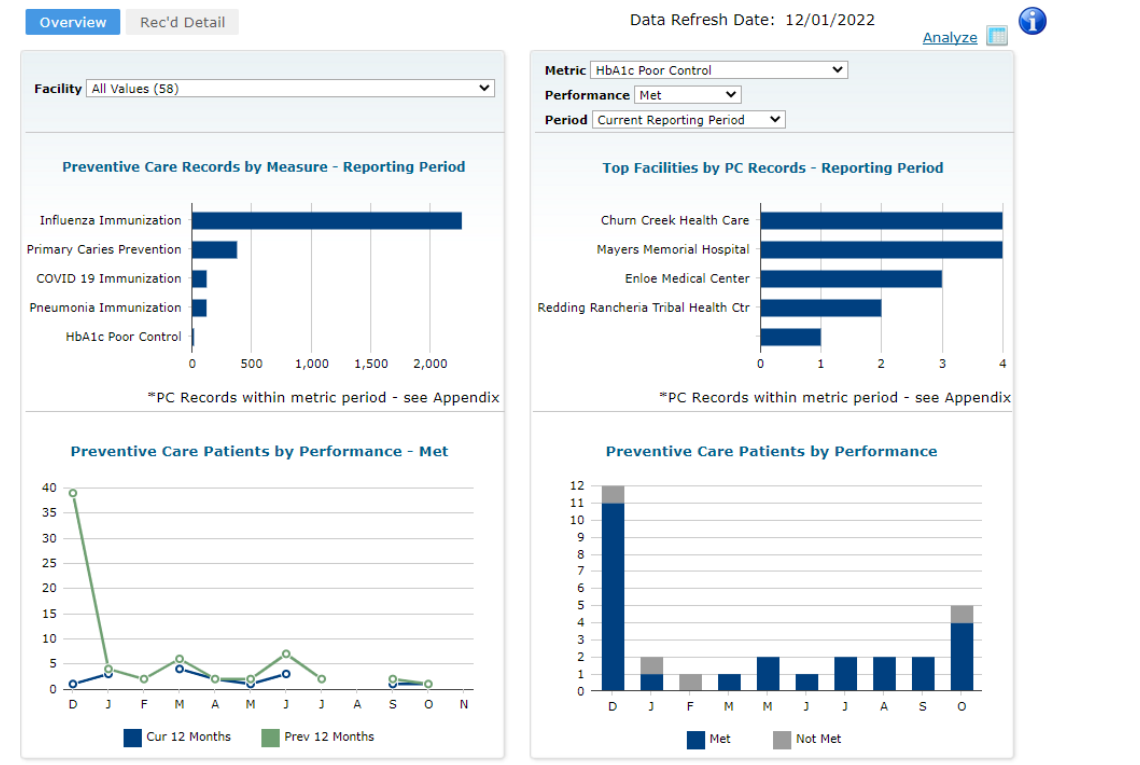
HOW DOES SacValley MedShare SUPPORT Quality / HEDIS

analytics17.konza.org/diveport#page=a0514e20-6487-43b2-9202-de0e627c200f

SACVALLEY MEDSHARE

Back Home

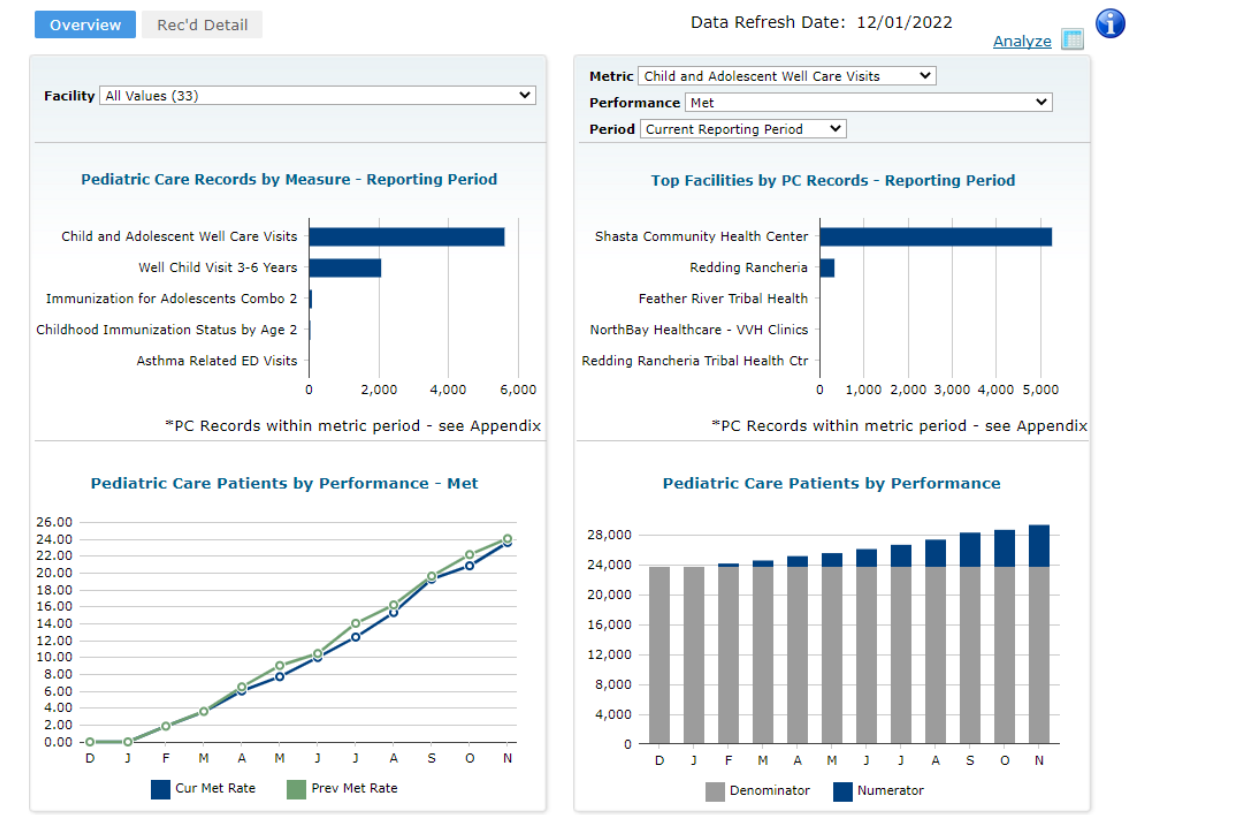
Quality Metrics



SACVALLEY MEDSHARE

Back Home

Pediatric Metrics



Understanding TEFCA: The Future of Nationwide Health Data Exchange

- Trusted Exchange Framework and Common Agreement
- Presented by SacValley MedShare

Background

- Born from the 21st Century Cures Act (2016)
- Designed by ONC to solve interoperability challenges
- Goal: A single on-ramp for nationwide exchange of health data

Two Core Components

- Trusted Exchange Framework (TEF): Principles of trust, transparency, cooperation
- Common Agreement (CA): Binding contract that governs participation
- Provides technical & legal foundation

Key Players

- **ONC:** Federal oversight
- **RCE (Sequoia Project):** Manages TEFCA operations
- **QHINs:** Qualified Health Information Networks (backbone organizations)
- **Participants & Subparticipants:** Health systems, HIEs, payers, providers, vendors

ONC

RCE

QHINs

Participants

Patients

Exchange Purposes

- Treatment
- Payment
- Health Care Operations
- Public Health
- Government Benefits Determination
- Individual Access Services

How It Works (Data Flow)

- Provider connects → QHIN → Nationwide Network → Other QHINs
- Enables query, response, and push notifications
- Future: FHIR-based APIs



Benefits of TEFCA

- Nationwide connectivity
- Standardized policies & agreements
- Better patient access to records
- Supports care coordination & value-based care
- Scales interoperability with fewer connections

Current Status

- First QHINs designated (2023–2024)
- Nationwide exchange rollout in progress
- FHIR APIs on future roadmap
- Ongoing stakeholder engagement

2023: QHINs
designated

2024:
Rollout
begins

Future: FHIR
APIs

Implications for Stakeholders

Providers
Simplified connectivity

HIEs/QHIOs
Intermediaries or partners

Payers
Access for value-based care

Public Health
Surveillance & reporting

Challenges Ahead

- State vs. federal consent and privacy laws
- Cost of participation
- Small orgs' technical readiness
- Overlap with existing networks (Carequality, CommonWell, eHealth Exchange)



**SACVALLEY
MEDSHARE**

Taking data from moveable to useable



A California Qualified Health Information Exchange

Q&A

be
the
change



**SACVALLEY
MEDSHARE**

Taking data from moveable to useable



A California Qualified Health Information Exchange

Contacts for SacValley MedShare

John Helvey

Chief Executive Officer

John.Helvey@sacvalleymms.org

530-864-9250

James Forte

Director of Business Development and Marketing

James.Forte@sacvalleymms.org

530-520-6223