

# Partnership Managed Medi-Cal Data Tracking

*Aliados Health  
Promising Practice*

## PARTNERSHIP DATA TRACKING OVERVIEW

Starting in January 2021, Aliados Health began managed Medi-Cal uploads for a pilot group of member health centers. After lengthy discussions with Partnership HealthPlan and identifying the need for accessing and sharing Managed Medi-Cal data, Aliados started proactively tracking Medi-Cal membership data at the aggregate level within the population health management tool Relevant. Aliados has created a process to assist health centers with monthly uploads of Partnership data and encourages other eligible health centers to use this process to keep accurate records of Partnership membership data at their own health center-level.

## AIM

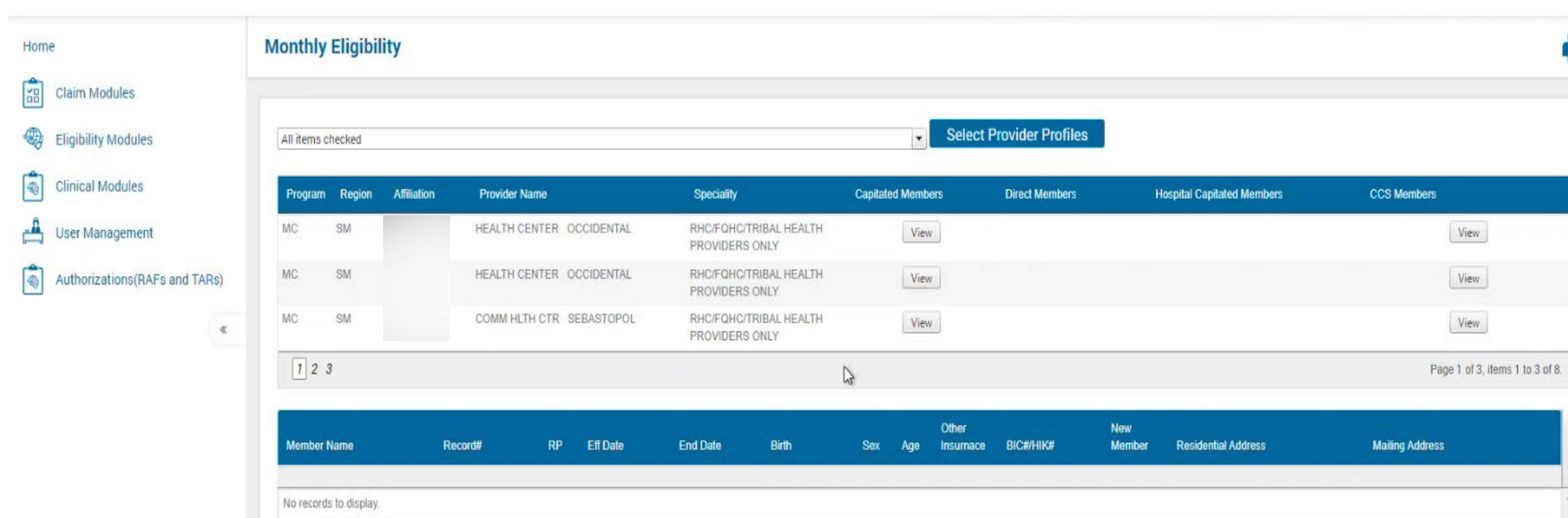
1. Utilize Partnership membership portal to download and prepare files for upload to population health management tool Relevant
2. Maintain accurate records of Managed Medi-Cal data to support outreach to new patients while creating reports and dashboards to track ongoing Partnership membership data to support quality improvement
3. Proactively track data for reporting purposes for health centers across Aliados Health's network

## CURRENT PARTICIPATING HEALTH CENTERS

1. Petaluma
2. Santa Rosa
3. West County
4. Sonoma Valley
5. Alexander Valley
6. Alliance Medical Center

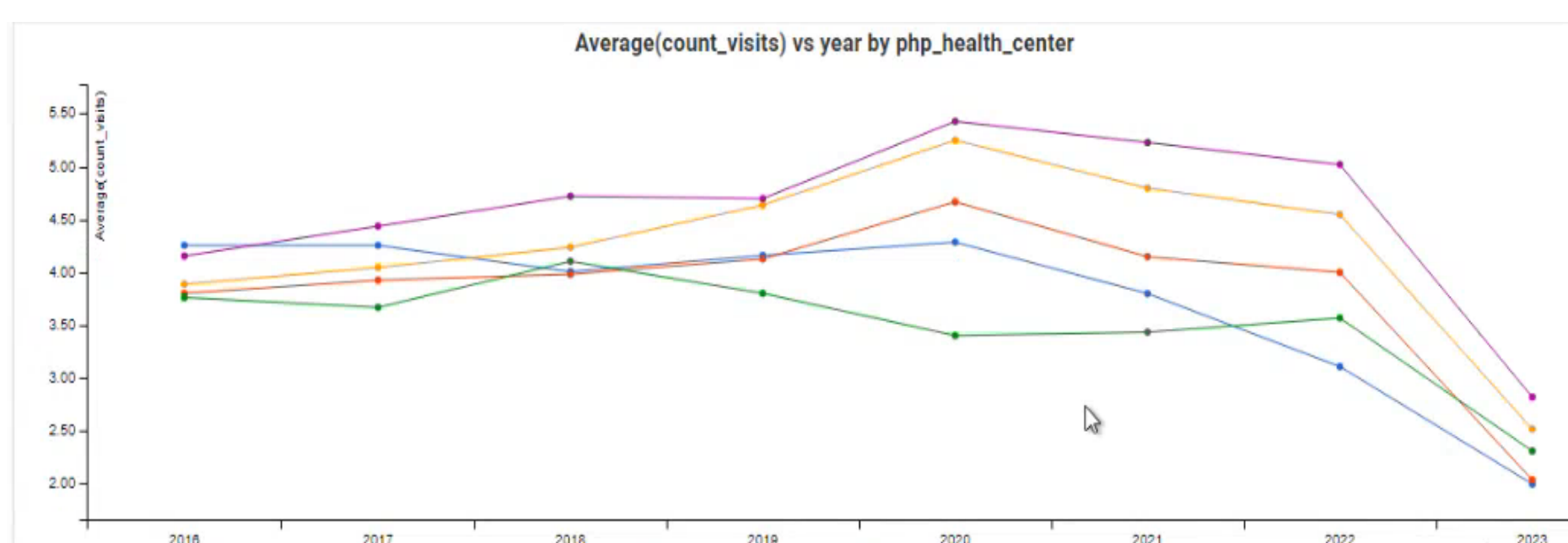
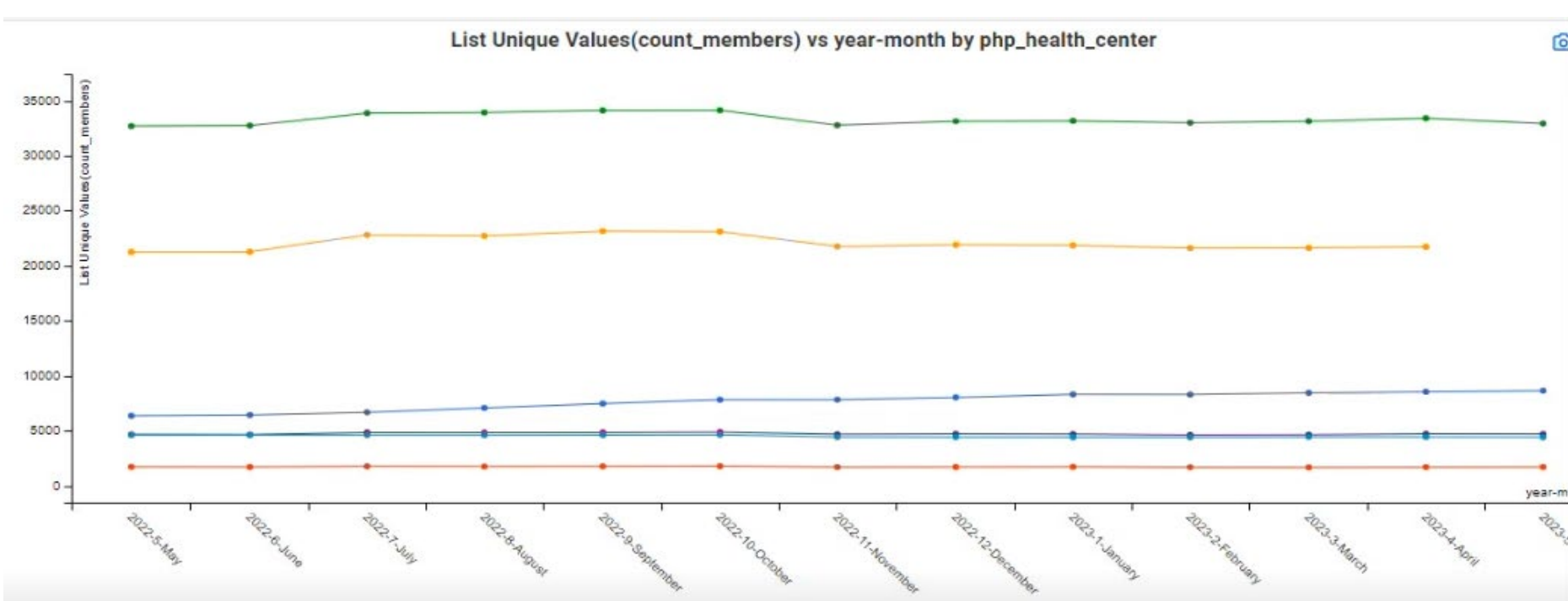
## PARTNERSHIP PORTAL & RELEVANT TRACKING

### Partnership Membership Portal Example: West County

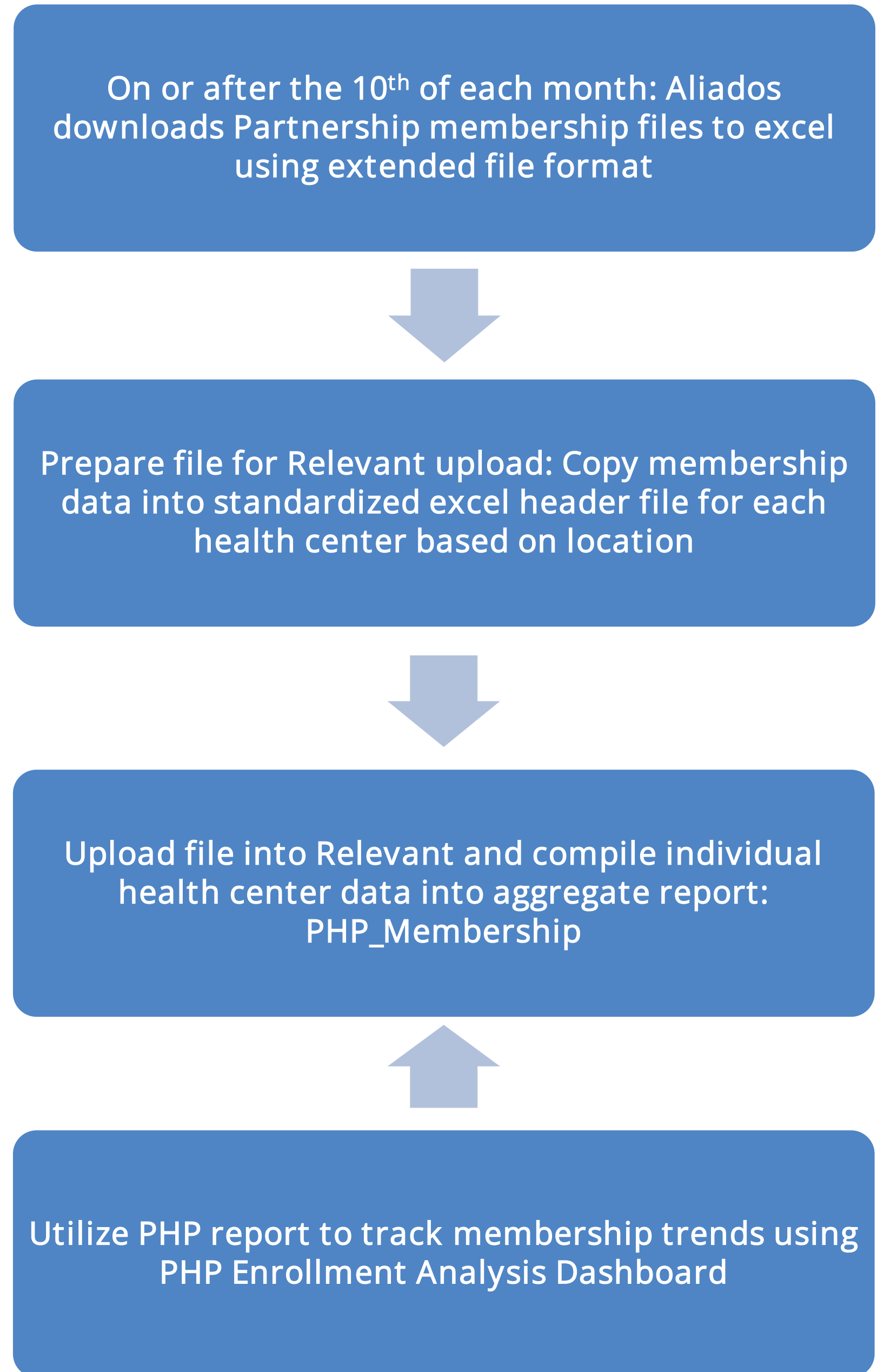


Program	Region	Alliation	Provider Name	Specialty	Capitated Members	Direct Members	Hospital Capitated Members	CCS Members
MC	SM		HEALTH CENTER - OCCIDENTAL	RHCFQHC/TRIBAL HEALTH PROVIDERS ONLY				
MC	SM		HEALTH CENTER - OCCIDENTAL	RHCFQHC/TRIBAL HEALTH PROVIDERS ONLY				
MC	SM		COMM HLTH CTR - SEBASTOPOL	RHCFQHC/TRIBAL HEALTH PROVIDERS ONLY				

### PHP Enrollment Analysis Dashboard in Relevant



## WORKFLOW



## IMPORTANT TIPS

1. Ensure data is in the correct file format: CSV UTF -8
2. Name the file correctly to ensure transformers in Relevant can process data
3. Once uploaded to Relevant, open file to validate the data based on the number of records

The once-a-month process takes about 30 minutes for health centers. Currently, file sizes range from 1,500 – 30,000 records per month based on health center size.

Aliados Health can provide tutorials on how to complete the upload process for any health center interested in tracking Partnership membership data as well as support health centers with their first upload.

## FUTURE PARTNERSHIP MEDI-CAL TRACKING

This upload structure is in place to be prepared for ongoing and future reporting requirements including metrics for quality improvement focus.

Aliados encourages member health centers to join in tracking Partnership data to create a fuller picture of aggregated membership data across our network.

Additionally, Aliados' goal is to have health centers track Partnership membership data at their own health center level as well as at the aggregate level.