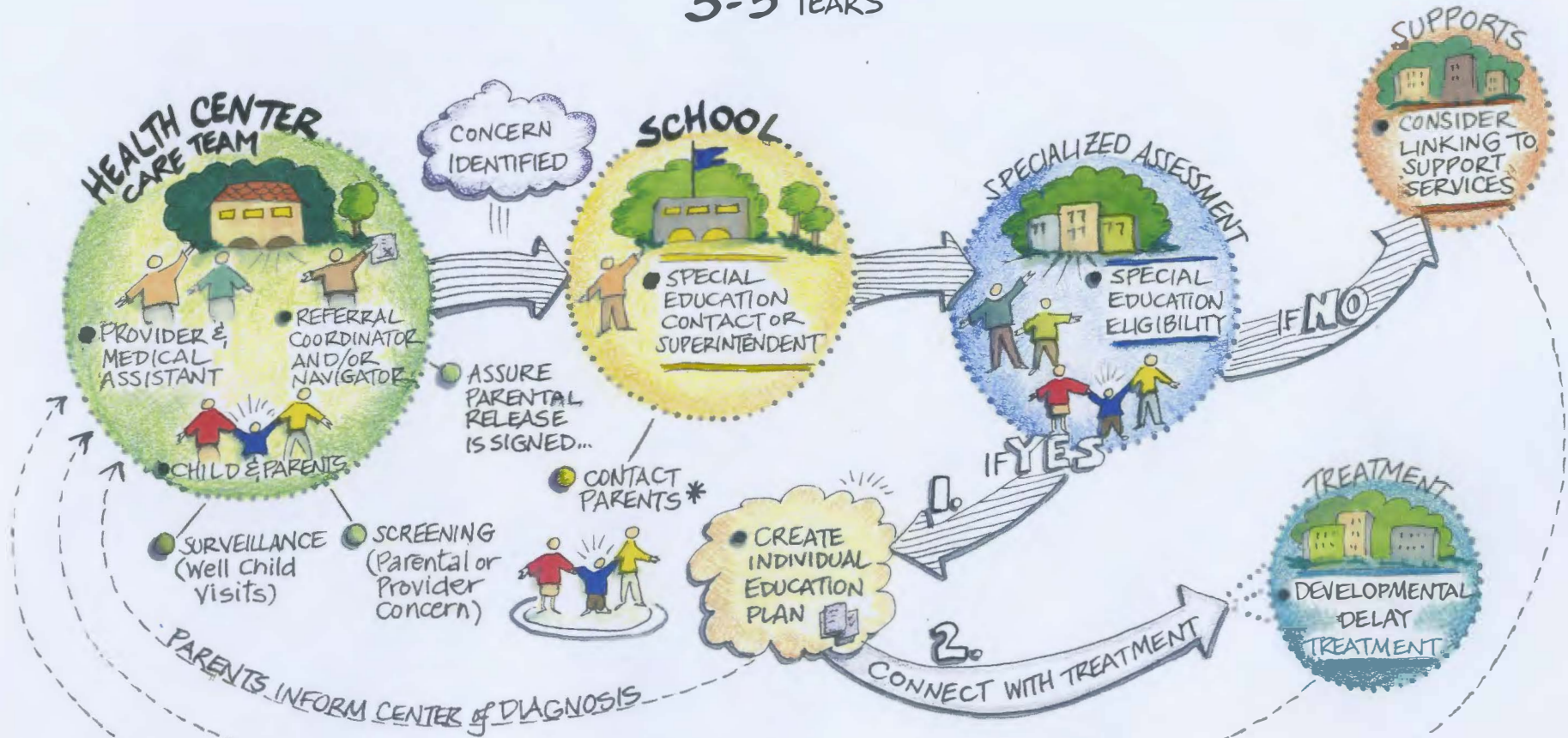


CHILD DEVELOPMENTAL SCREENING, REFERRAL & TREATMENT COORDINATION in SONOMA COUNTY

3-5 YEARS



* IN 15
CALENDAR DAYS
IN SUMMER, CONSIDER
SUPPORT SERVICES TO
HOLD OVER UNTIL SCHOOL
OPENS IN THE FALL.

CHILD DEVELOPMENTAL SCREENING, REFERRAL & TREATMENT COORDINATION in SONOMA COUNTY

0-3 YEARS*

